

FOR SALE

Sale Price: \$630,000

Office – Professional Plaza

8831 South Redwood Road, Suite D West Jordan Utah 84088



Property Information:

- 2,877 SF Total
 - 1,918 SF Main/Level Basement Suite
 - 959 SF Upper Level Suite
- Desirable end unit with added natural light
- 3 Private Restrooms
- Basement Entrance
- Close to Third District Court and West Jordan City Offices
- Near restaurants and retail outlets
- Building visible on Redwood Road
- Easy Access to I-15 at 9000 South
- Zoned Professional Office (PO)

Demographics	1 Mile	3 Miles
Population	13,935	113,319
Households	4,790	38,052
Median Household Income	\$83,920	\$84,741
Population Growth 2023-2028	1.89%	3.07%

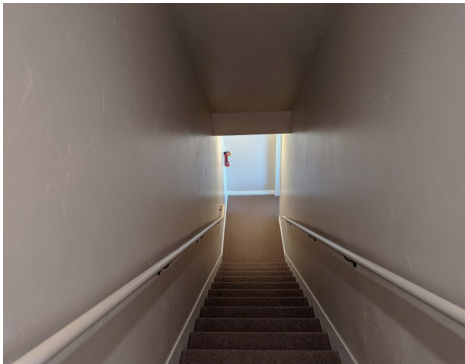
CONTACT:

Stew Knight
801.913.4990
stew@knirea.com
knirea.com

KREA
Knight Real Estate Advisors

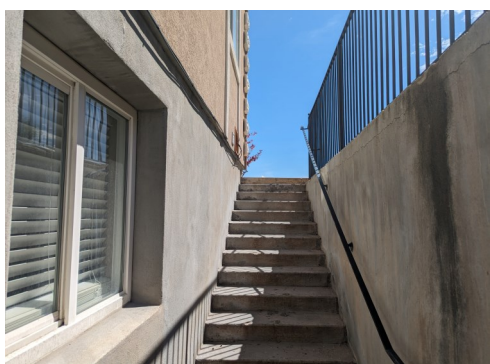
Office

Main Floor



8831 S Redwood Road Suite D

Basement



CONTACT:

Stew Knight
801.913.4990
stew@knirea.com
knirea.com

KREA
Knight Real Estate Advisors

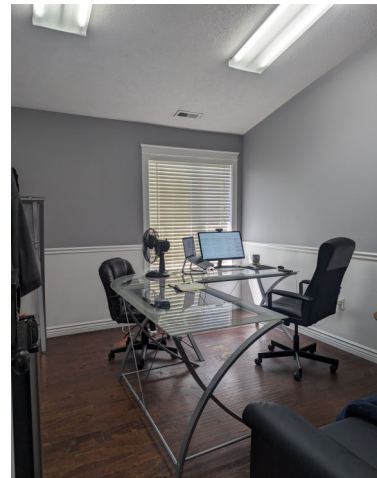
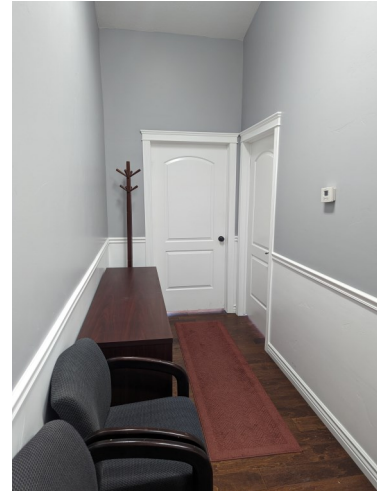
Office

2nd Floor



8831 S Redwood Road Suite D

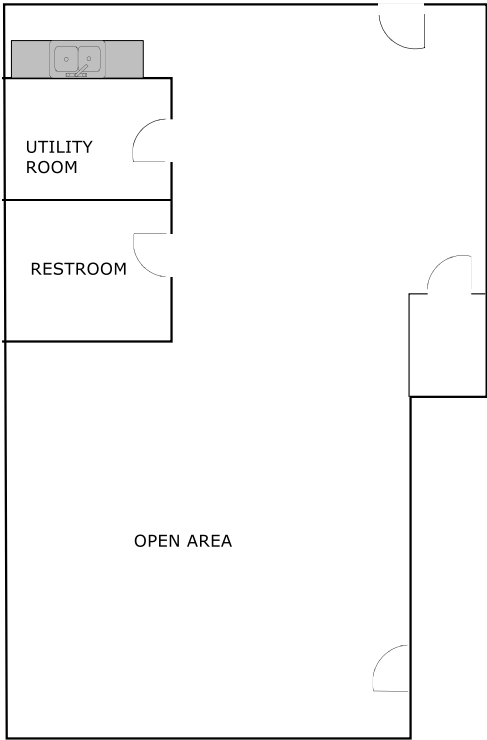
2nd Floor



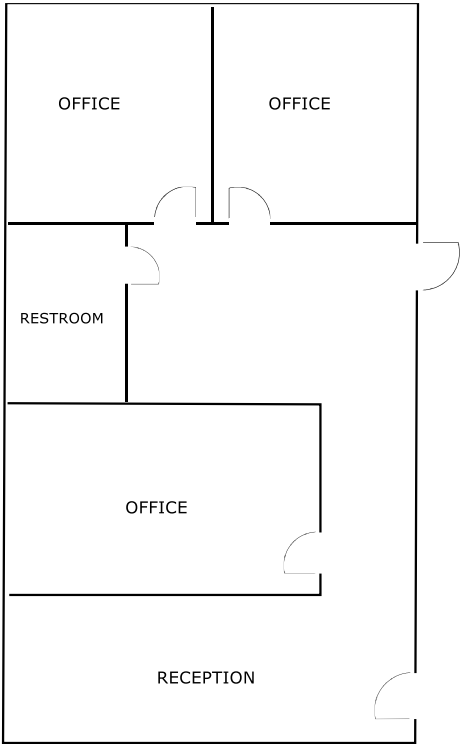
CONTACT:

Stew Knight
801.913.4990
stew@knirea.com
knirea.com

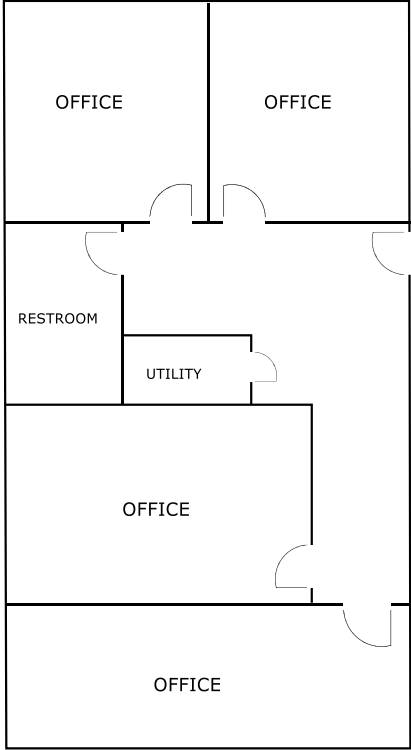
KREA
Knight Real Estate Advisors



Suite D Basement



Suite D Main Level



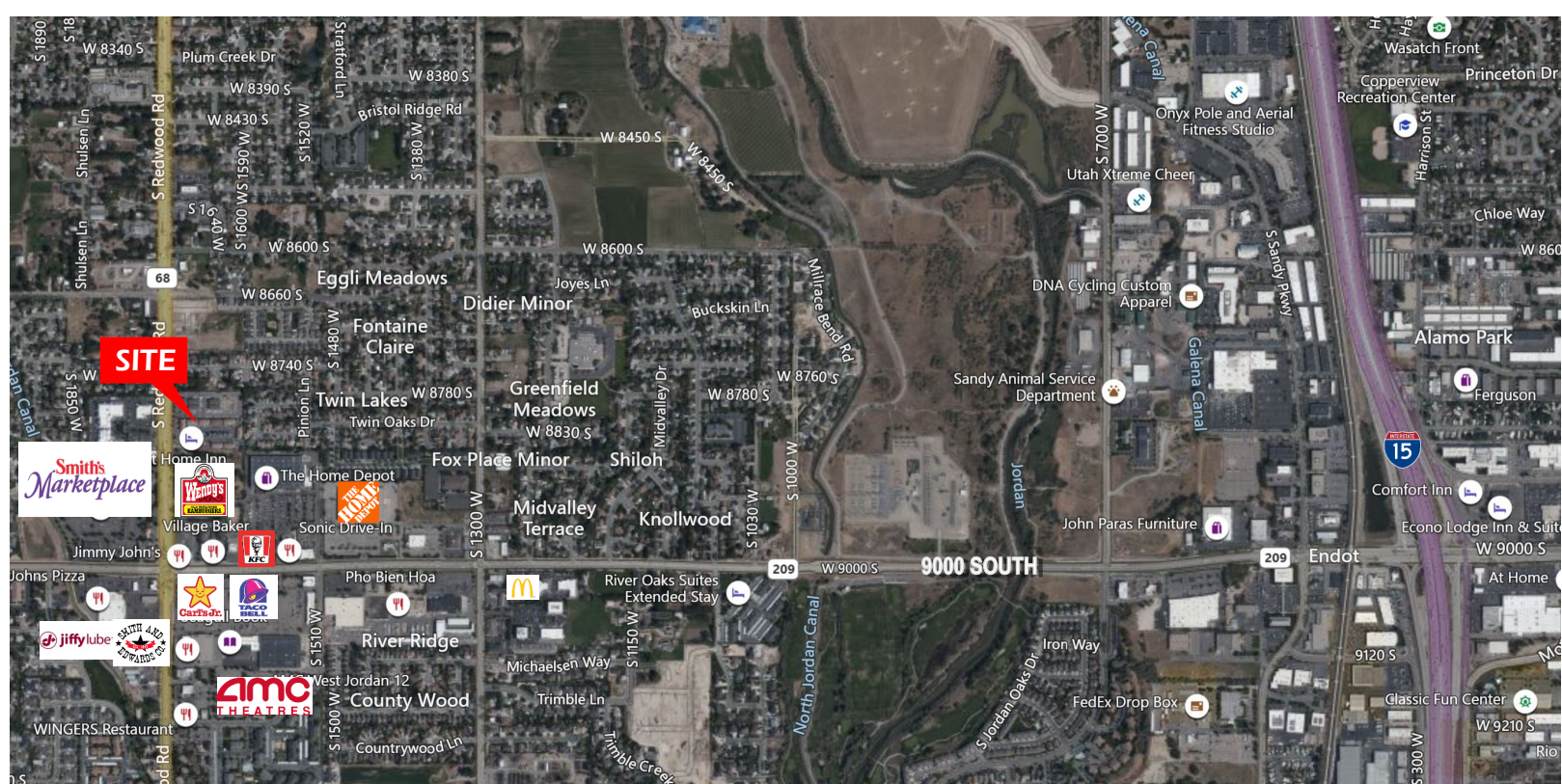
Suite D Upper Level



CONTACT:

Stew Knight
801.913.4990
stew@knirea.com
knirea.com

KREA
Knight Real Estate Advisors

**CONTACT:**

Stew Knight
801.913.4990
stew@knirea.com
knirea.com

KREA
Knight Real Estate Advisors

This statement, with the information it contains, is given with the understanding that all negotiations relating to the sale, purchase, or lease of the property described above shall be conducted through this office. The above information, while not guaranteed, has been secured from sources we believe to be reliable. Buyer or tenant to verify the square footage.