

FOR LEASE

RETAIL / OFFICE

1924 South 1100 East, Salt Lake Utah 84105



Property Information:

- 2,064 sq. ft. total
- ADA accessible ramp
- Great Visibility
- Heart of Sugarhouse location on Corner
- On - site parking
- On - street parking in the rear on McClelland Street and on the side on Ramona Ave
- Within walking distance of retail, restaurants, office, banks, and Sugarhouse park
- Near Sugarhouse Trolley Line
- Floor Plan on Reverse

DEMOGRAPHICS	1 MILE	3 MILE	5 MILE
Population			
2019	19,997	146,660	309,011
Households			
2019	8,370	60,894	123,542
Income			
2019 Med HHI	\$69,703	\$56,891	\$56,279

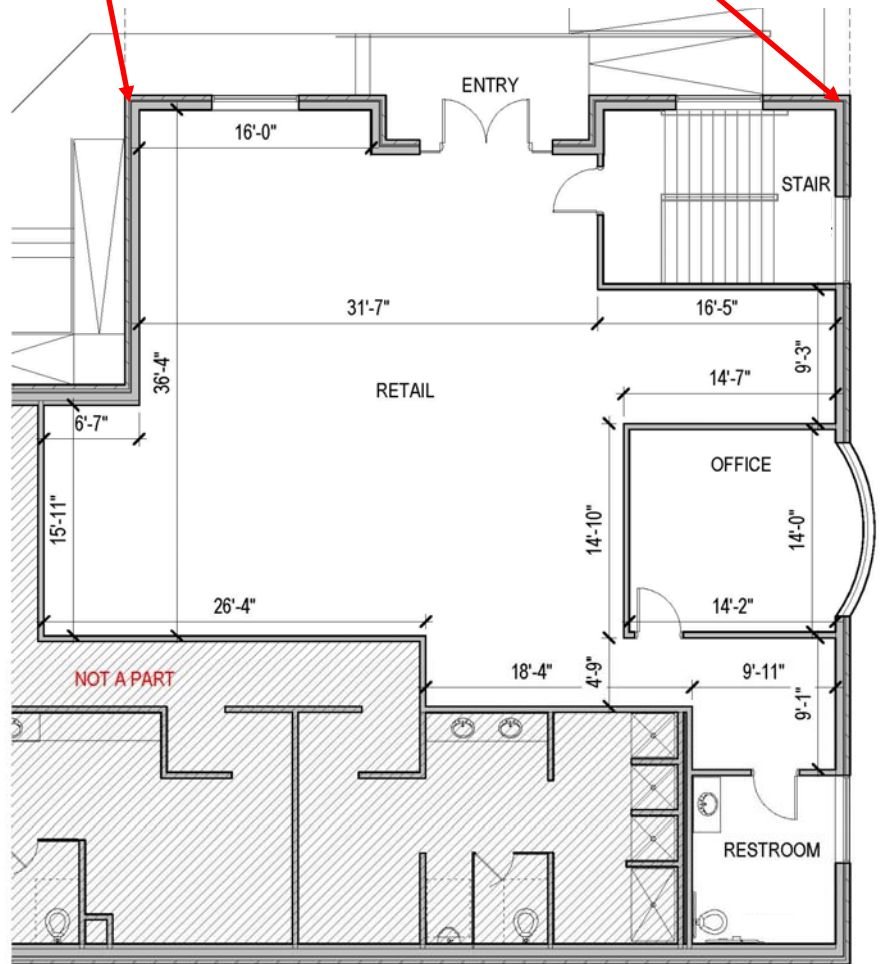
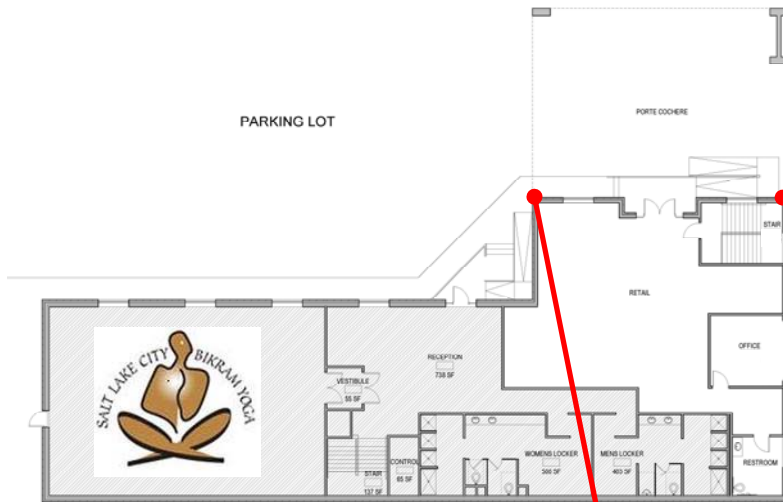
Additional Information:

- Zoned RB (Residential Business)
- Signage Available

CONTACT:

Greg Airhart, Owner
GBA PROPERTIES LLC
801.488.4681
gairhart@gmail.com

Stew Knight
Knight Real Estate Advisors
801.913.4990
stew@knirea.com



FLOOR PLAN

CONTACT:
Greg Airhart, Owner
GBA PROPERTIES LLC
801.488.4681
gairhart@gmail.com

Stew Knight
Knight Real Estate Advisors
801.913.4990
stew@knirea.com



CONTACT:

Greg Airhart, Owner
GBA PROPERTIES LLC
 801.488.4681
 gairhart@gmail.com

Stew Knight
Knight Real Estate Advisors
 801.913.4990
 stew@knirea.com